



Leonard Lem, MD, DDS, Inc.
650 W. Duarte Road
Suite #300
Arcadia, CA 91007

Please call for an appointment.

626-821-9633 (office)
626-821-9697 (fax)

In-Office 3-Dimensional Scans

Cone Beam technology has brought high-definition imaging to the head and neck region.

- *90% less radiation than hospital scan
- *Patient seated upright
- *Open gantry reduces patient's fear
- *8.5 second scan time

Implant Surgery

- *Determine bone volume of implant site
- *Avoid inferior alveolar nerve or sinus
- *Evaluate donor sites for bone grafting
- *Exports to Simplant or Nobel BioGuide

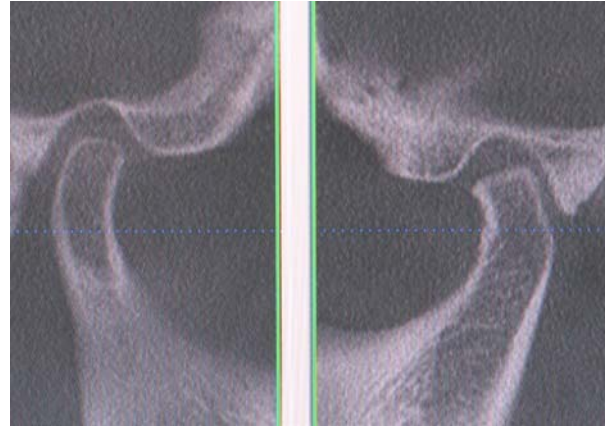
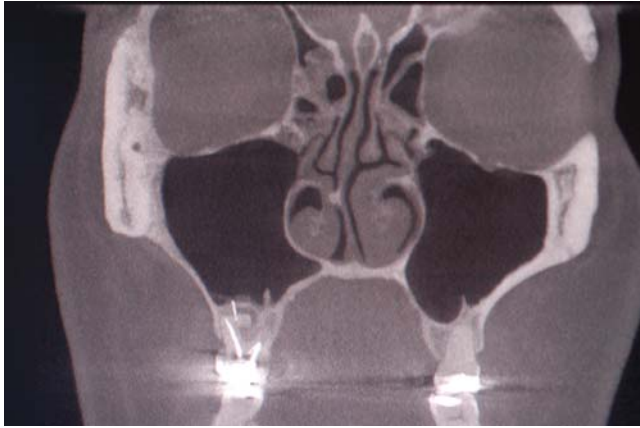
Orthodontics / TMJ

- *Exports to Dolphin for Ceph tracing and treatment plan.
- *Visualize impacted teeth for possible eruption or extraction.
- *Evaluate regions for mini-implant orthodontic anchorage.
- *TM joint imaging

Next
Generation
i-CAT



Next Generation i-CAT



Insurance Billing

Payment is required at the time of scan. i-CAT imaging can be billed under medical insurance provided the patient does not have a HMO plan. We have experience in billing medical insurance.

Same Day Service

In most cases, we can provide the imaging service on the same day. We will provide the ordering doctor a print out of the region of interest or a CD ROM of the data to be viewed on the doctor's office computer.

The Future is Now

Give your patients the technology edge. Conventional x-rays only show two dimensional information. Three-dimensional imaging eliminates superimposition of closely associated structures.

